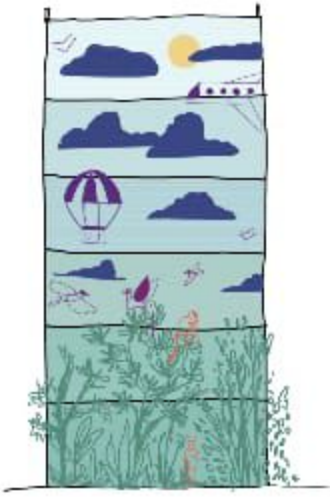


FLH 2 FOREST

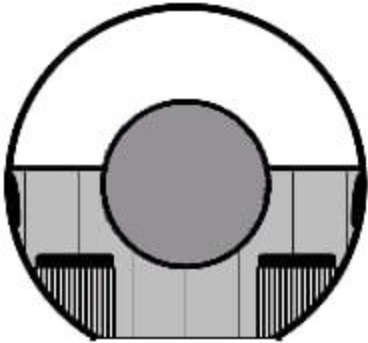


CONCEPTUAL IDEA

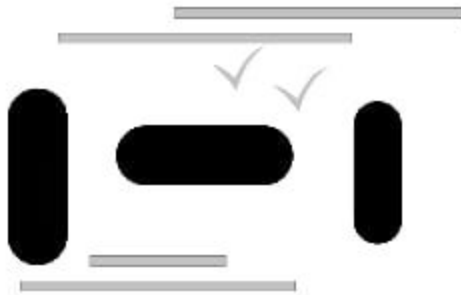
As a true embodiment to its name Feels like Home, the hostels have been designed to make one feel comfortable and relaxed. Muted neutral backgrounds with a pop of colour selected from the logo itself gives a bright and vibrant vibe to the entire space. In order to keep branding and visual graphics in line for both hostels, similar yet contrasting color schemes have been selected. Abundant green spaces in the common areas and extra lounge spaces have been provided to create a lively atmosphere. Unlike other hostels, basic facilities like pantry, games room, gym, reading space and terrace pavilion have also been added as added provisions. Services are taken care of by providing ample storage spaces within the room and even in the larger



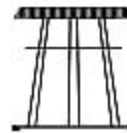
CONCEPTUAL VIEWS



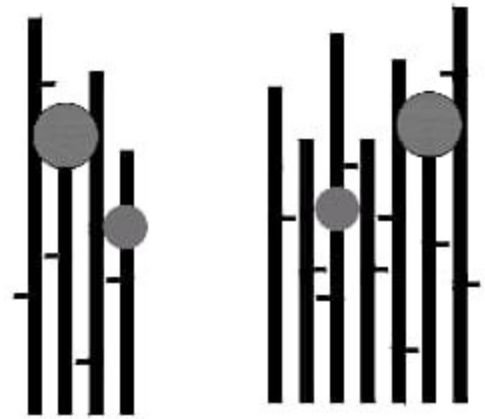
Circular seating



Tack boards and wall paints



Stool

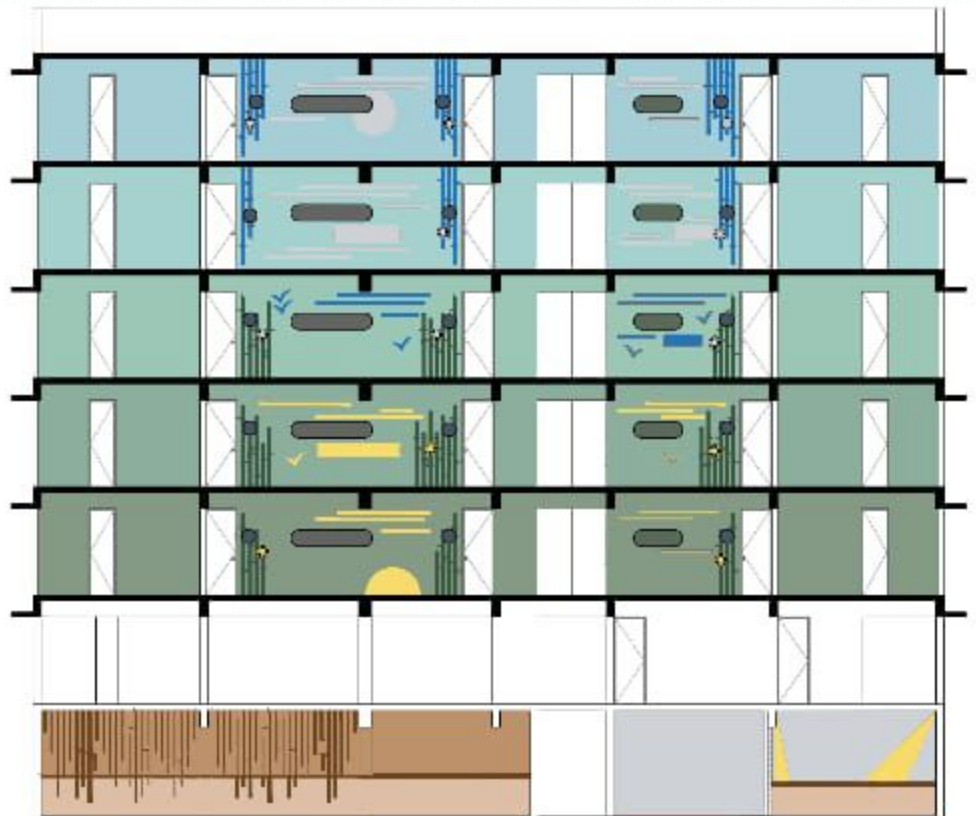


Vertical elements

ELEMENTS



FACADE



CORRIDORS